

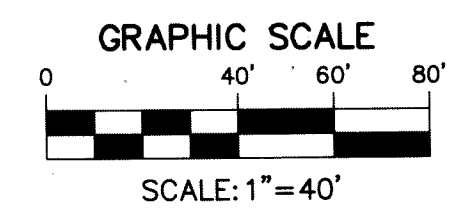
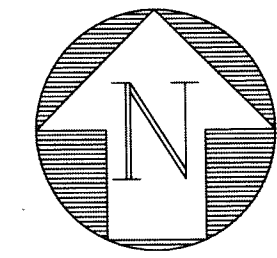
RD ROYAL PALM BEACH, LLC SR 80 APARTMENT COMPLEX

BEING A PORTION OF SECTION 36, TOWNSHIP 43 SOUTH, RANGE 41 EAST,
THE VILLAGE OF ROYAL PALM BEACH, PALM BEACH COUNTY, FLORIDA,

DECEMBER 2016

SHEET 3 OF 5

STATE OF FLORIDA }
COUNTY OF PALM BEACH } S.S.
THIS INSTRUMENT WAS FILED FOR
RECORD AT _____
THIS ____ DAY OF _____
2016 AND DULY RECORDED
IN PLAT BOOK NO. _____
ON PAGE _____
SHARON R. BOCK,
CLERK AND COMPTROLLER



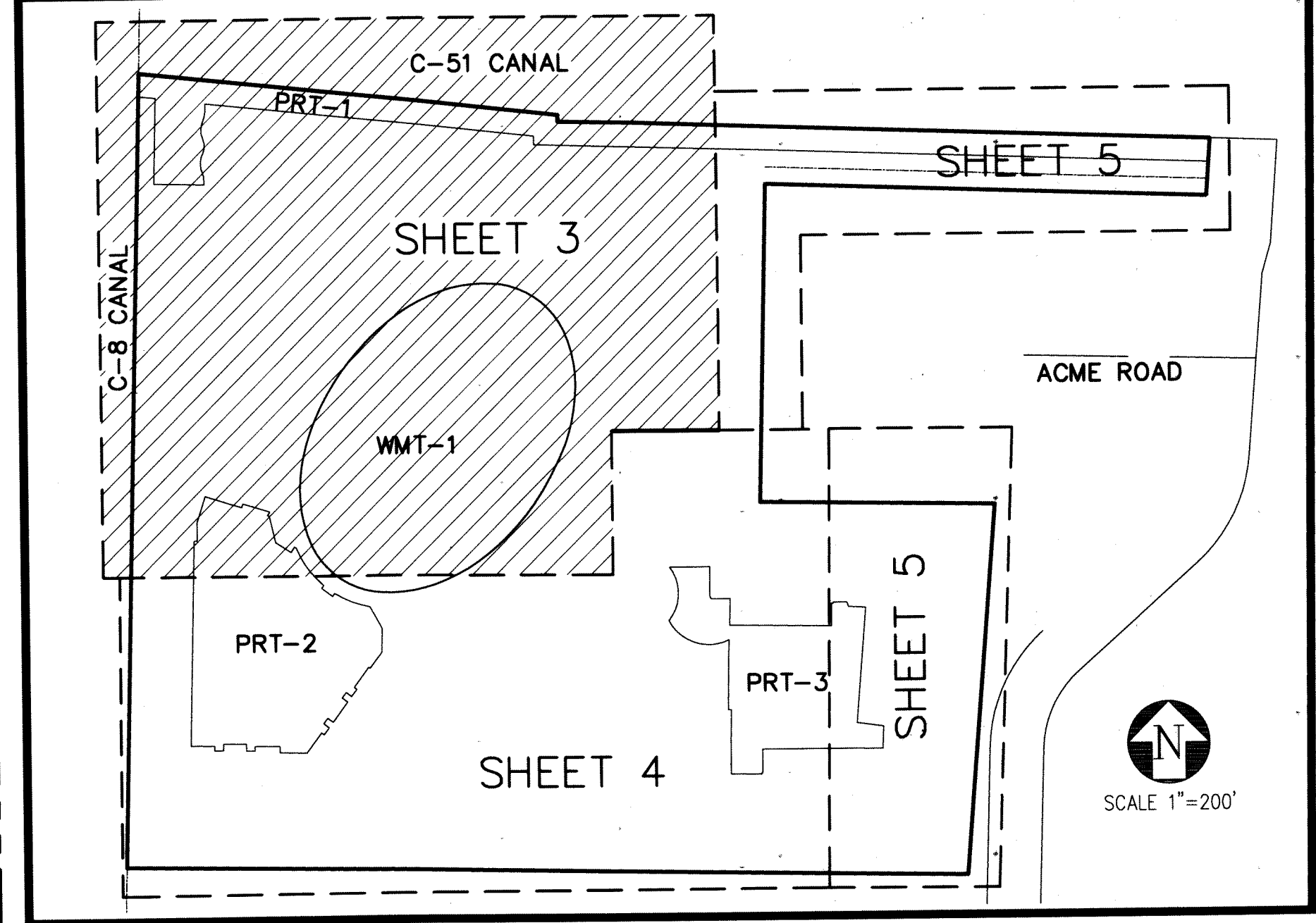
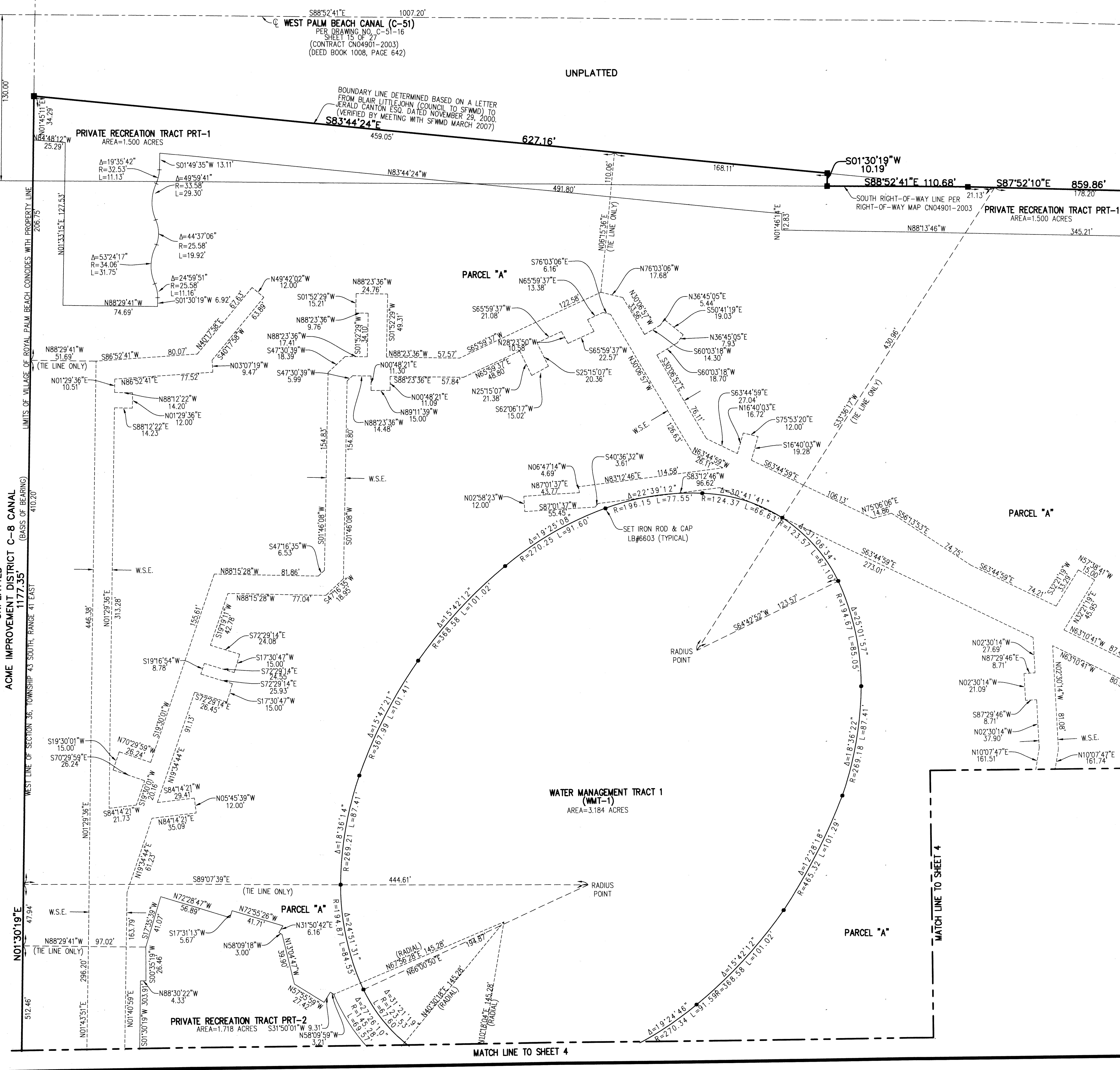
BY: _____ D.C.
43

MATCH LINE TO SHEET 5

MATCH LINE TO SHEET 5

MATCH LINE TO SHEET 4

MATCH LINE TO SHEET 5



SHEET INDEX MAP

- LEGEND**
- ⊙ CENTERLINE
 - ⊔ LWDD LAKE WORTH DRAINAGE DISTRICT
 - ⊔ O.R.B. OFFICIAL RECORD BOOK
 - ⊔ SFWMD SOUTH FLORIDA WATER MANAGEMENT DISTRICT
 - ⊔ P.B. PLAT BOOK
 - ⊔ P.C.(S) PAGE(S)
 - ⊔ R/W RIGHT-OF-WAY
 - SET 4" X 4" CONCRETE MONUMENT
 - WITH ALUMINUM DISK STAMPED P.R.M. LB#6603
 - ⊔ FOUND PERMANENT REFERENCE MONUMENT AS NOTED
 - SET MAG NAIL AND DISK PCP LB#6603
 - ⊙ SET #5 IRON ROD AND CAP ENGENUITY LB#6603
 - ⊔ RADIUS
 - ⊔ L ARC LENGTH
 - ⊔ Δ DELTA ANGLE
 - ⊔ W.S.E. WATER AND SEWER EASEMENT
 - ⊔ PRT PRIVATE RECREATION TRACT
 - ⊔ WMT WATER MANAGEMENT TRACT
 - ⊔ D.B. DEED BOOK
 - ⊔ LB LICENSED BUSINESS
 - ⊔ PRM PERMANENT REFERENCE MONUMENT
 - ⊔ PCP PERMANENT CONTROL POINT

RD ROYAL PALM BEACH, LLC SR 80 APARTMENT COMPLEX

A Higher Standard of Excellence

1280 NORTH CONGRESS AVE, SUITE 101
WEST PALM BEACH, FLORIDA 33409
PH (561)855-1151 • FAX (561)832-9390
WWW.ENGENUITYGROUP.COM

DATE	12/14/2016
SCALE	1"=40'
CAD FILE	14124.02 PLAT
SISK PROJECT	14124.01 SHELBY HOME
DRAWN	STAFF
CHECKED	JM

SHEET
NO.
3/5

JOB NO.
14124.02

Y:\Land Projects\RD14124.01\Shelby Home Site\DWG\14124_02_Plat March 2016.dwg 6/16/2016 10:42:17 AM EDT